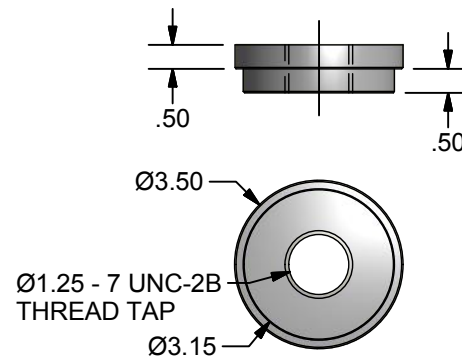
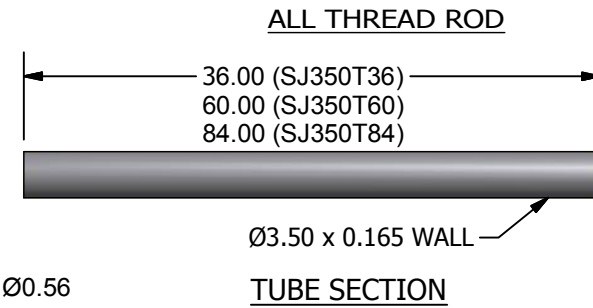
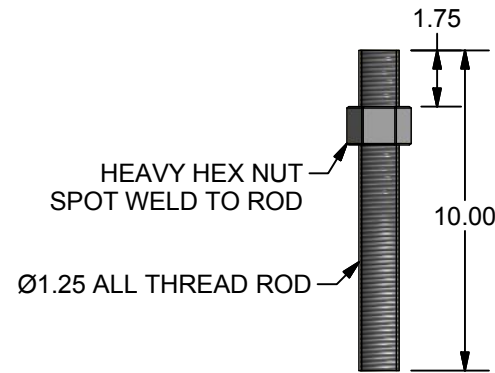
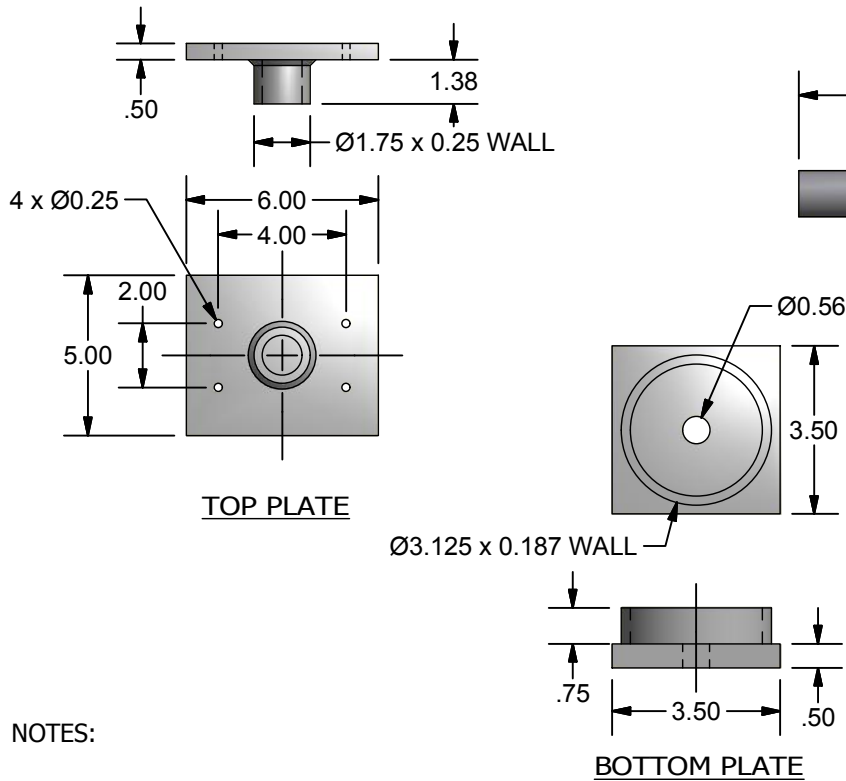
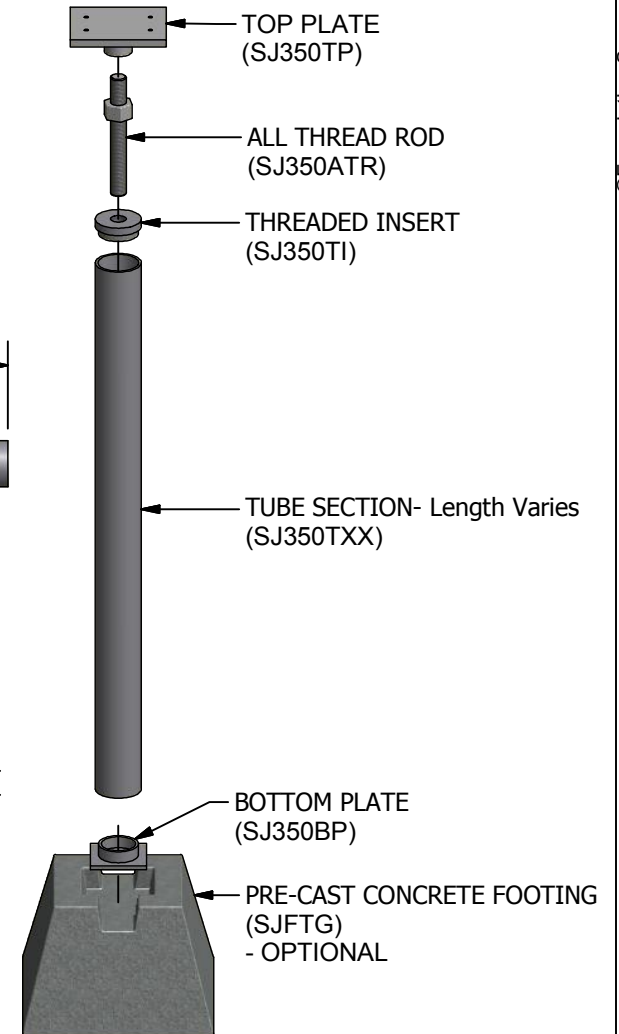


SJ350 SMARTJACK™

Part Number	Product Name
SJ350TP	Top Plate
SJ350ATR	1-1/4" x 10" All Thread Rod
SJ350TI	Threaded Insert
SJ350BP	Bottom Plate
SJ350T36	3' Tube Section
SJ350T60	5' Tube Section
SJ350T84	7' Tube Section
SJFTG	Pre-Cast Concrete Footing



THREADED INSERT



NOTES:

- MINIMUM MATERIAL REQUIREMENTS:
TUBE - Fy = 50 ksi, Fu = 55 ksi.
PLATE - ASTM A36
ALL THREAD ROD - Fu = 85 ksi.
- ALL WELDING TO BE IN ACCORDANCE WITH AWS D1.1 LATEST ISSUE WITH E70-XX MIN ELECTRODE.
- TUBE SECTIONS ARE TRIPLE COATED IN LINE GALVANIZED. ALL OTHER STEEL COMPONENTS ARE ZINC PLATED PER ASTM B633.
- THIS DOCUMENT IS MEANT TO SERVE AS A GENERAL DESCRIPTION FOR THE PRODUCTS SHOWN FOR SUBMITTAL PURPOSES. MORE DETAILED MANUFACTURING DRAWINGS ARE AVAILABLE UPON REQUEST.



12330 Cary Circle, Omaha, NE 68128
Phone: 800-281-8545

All Dimensions Inches

Part #:

Date: 10/17/11

SD-SJ-11001

Title:

SJ350 Smart Jack Assembly

Revision: 0

Sheet: 1 of 1